








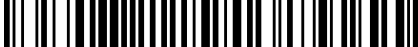
Worklist: 6129

<u>LAB CASE</u>	<u>ITEM</u>	<u>ITEM TYPE</u>	<u>DESCRIPTION</u>	
M2022-3803	1	BCK	AM 25/AM 26 Blood MultiDrug/THC Screen by LC-QQQ	
M2022-3881	2	BCK	AM 25/AM 26 Blood MultiDrug/THC Screen by LC-QQQ	
P2022-2817	1	BCK	AM 25/AM 26 Blood MultiDrug/THC Screen by LC-QQQ	
P2022-2860	1	BCK	AM 25/AM 26 Blood MultiDrug/THC Screen by LC-QQQ	
P2022-2883	1	BCK	AM 25/AM 26 Blood MultiDrug/THC Screen by LC-QQQ	
P2022-2883	2	BCK	AM 25/AM 26 Blood MultiDrug/THC Screen by LC-QQQ	
* P2022-2888	1	BCK	AM 25/AM 26 Blood MultiDrug/THC Screen by LC-QQQ	
P2022-2895	1	BCK	AM 25/AM 26 Blood MultiDrug/THC Screen by LC-QQQ	
P2022-2934	1	BCK	AM 25/AM 26 Blood MultiDrug/THC Screen by LC-QQQ	
P2022-2943	1	BCK	AM 25/AM 26 Blood MultiDrug/THC Screen by LC-QQQ	
P2022-2954	1	BCK	AM 25/AM 26 Blood MultiDrug/THC Screen by LC-QQQ	
P2022-2959	1	BCK	AM 25/AM 26 Blood MultiDrug/THC Screen by LC-QQQ	
P2022-2960	1	BCK	AM 25/AM 26 Blood MultiDrug/THC Screen by LC-QQQ	
P2022-2973	1	BCK	AM 25/AM 26 Blood MultiDrug/THC Screen by LC-QQQ	
P2022-2998	1	BCK	AM 25/AM 26 Blood MultiDrug/THC Screen by LC-QQQ	
P2022-3014	1	BCK	AM 25/AM 26 Blood MultiDrug/THC Screen by LC-QQQ	
P2022-3019	1	BCK	AM 25/AM 26 Blood MultiDrug/THC Screen by LC-QQQ	
P2022-3020	1	BCK	AM 25/AM 26 Blood MultiDrug/THC Screen by LC-QQQ	
P2022-3025	1	BCK	AM 25/AM 26 Blood MultiDrug/THC Screen by LC-QQQ	
P2022-3033	1	BCK	AM 25/AM 26 Blood MultiDrug/THC Screen by LC-QQQ	
P2022-3040	1	BCK	AM 25/AM 26 Blood MultiDrug/THC Screen by LC-QQQ	

*Sample was not ran on AM 26 due to limited sample volume.

Worklist: 6129

SC

<u>LAB CASE</u>	<u>ITEM</u>	<u>ITEM TYPE</u>	<u>DESCRIPTION</u>	
P2022-3041	1	BCK	AM 25/AM 26 Blood MultiDrug/THC Screen by LC-QQQ	
P2022-3044	1	BCK	AM 25/AM 26 Blood MultiDrug/THC Screen by LC-QQQ	
P2022-3045	1	BCK	AM 25/AM 26 Blood MultiDrug/THC Screen by LC-QQQ	
P2022-3047	1	BCK	AM 25/AM 26 Blood MultiDrug/THC Screen by LC-QQQ	
P2022-3049	1	BCK	AM 25/AM 26 Blood MultiDrug/THC Screen by LC-QQQ	
P2022-3051	1	BCK	AM 25/AM 26 Blood MultiDrug/THC Screen by LC-QQQ	
P2022-3105	2	BCK	AM 25/AM 26 Blood MultiDrug/THC Screen by LC-QQQ	
P2022-3126	1	BCK	AM 25/AM 26 Blood MultiDrug/THC Screen by LC-QQQ	

SC

**Idaho State Police
Forensic Services**

Request for Departure from an Analytical Method or Quality Standard

Deviation Number (assigned by QM): TOX-22-01

Date of Request: **2/3/2022**

Requestor/Discipline: Celena Shrum/Toxicology

Analytical Method/Quality Standard, Revision #: AM #25, AM #28, AM #29, Revision 13

Temporary or Permanent Deviation: Permanent

Scope of Deviation (record specific information, e.g. affected programs, evidence types, expected end date; etc): Deviation will remain in place until the change is made in the next method revision.

Deviation Request (Describe detailed instructions of the changes being made; include reference to specific section number(s) in the method manual): 4.1.4 (Place plate on shaking incubator at approximately 900 rpm for approximately 15 minutes) of AM #25, AM # 28, and AM #29 is being removed. The removal of this step was tested in the validation “Addition of Compounds/Modifications for the MDS” (approved on 2/2/2022) and it was determined that that step is not necessary and can be removed.

Technical Justification for Analytical Method Deviations: Refer to validation “Addition of Compounds/Modifications for the MDS” (approved on 2/2/2022)

Technical Review

Departure approved
Comments:

Departure Not Approved
Comments:

Approver: Rachel Cutler
Title: Laboratory Manager



Date: 2/10/2022

Quality Review

Quality Approver: Jason Crowe
Title: Quality Manager
Date: 2/10/2022



SC

AM# 25: Multi-Drug Screen in Blood and Urine by LC-MS/MS

Extraction Date: 10/18/2022
Plate lot#: IDP-120-2-220805

Analyst: Sarah Collins
Retest Date: 02/05/23

Mobile phase A: 10mM Amm Form
Instant Buffer I

Mobile phase B: 0.1% Formic Acid in MeOH
Ethyl Acetate LC Methanol

Blank Blood Lot: Lampire 22B52015-1

Blank Urine Lot: N/A

Column: Phenomenex Phenyl Hexyl (4.6x50mm, 2.6um)

LCMS-QQ ID: 069901

Pre-Analytic:

- 1. Check levels of mobile phases and needle wash refill as needed. Ensure waste is not full.
- 2. Ensure correct column is installed and begin mobile phase flow allow to equilibrate ~ 30 minutes.

Analytic:

- 1. Remove standards, plate, controls, and samples from cold storage. Allow to reach room temperature.
- 2. Urine Hydrolysis: In blank well, add 250µL urine, 40µL BG Turbo, and 100µL Instant Buffer I. Place on plate shaker for 5 minutes.
- 3. Using a calibrated pipette, pipette **250µL blood and urine** (if applicable) into wells of analytical (standards) plate.
Pipette ID: #42
- 4. Place on shaking incubator at ambient temp., 900rpm for 15 minutes. (SKIPPED PER DEVIATION)
- 5. Pipette **250µL 0.5 M ammonium hydroxide** in wells of analytical plate.
- 6. Place on shaking incubator at ambient temp., 900rpm for 15 minutes.
- 7. Transfer **200-450µL of blood+base and urine+base (if applicable)** mixture to corresponding wells of SLE+ plate.
Amount transferred: 300 uL
- 8. Apply positive pressure for approx. 10-15 seconds (or until no liquid remains on top of sorbent).
(Load at 85-100 PSI- Selector to the right).
- 9. Wait 5 minutes.
- 10. Add **900uL ethyl acetate.**
- 11. Wait 5 minutes.
- 12. Apply positive pressure for approx. 15 seconds. **(10-15 PSI- Selector to the left).**
- 13. Add **900uL ethyl acetate.**
- 14. Wait 5 minutes.
- 15. Apply positive pressure for approx. 15 seconds. **(10-15 PSI- Selector to the left).**
- 16. Remove plate containing eluate. Place on SPE Dry and evaporate to dryness at approx. 35°C. If run contains urine, add 50µL 1% HCl in MeOH to wells and place plate cover on plate before drying.
- 17. Reconstitute in **100µL 20% LC MeOH** and heat seal plate with foil. Place in autosampler and run worklist.

Post-Analytic

- 1. Open quantitation software and create a new quantitation batch.
- 2. Make necessary changes to integration limits
- 3. Evaluate samples, S/N of primary transition >5 and S/N of secondary transition >3 or evaluation of peak symmetry and resolution. Within +/- 2% or 0.1 min RT of administrative control. Calculated concentration of 5 or greater or 2-5 for discretionary range.
- 4. Did all QCs pass for each analyte? If no, describe issue in comments (below).
- 5. Central File Packet to include: LIMS Worklist, Method Checklist, Calibration and Control Reports

COMMENTS: Samples were extracted on 10/18/22 and injected on 10/19/22. The samples were stored in the freezer until they were ready for injection.

SC

	1	2	3	4	5	6	7	8	9	10	11	12
A	IS + Cal. 1								p2022-3126-1	p2022-3040-1	p2022-2960-1	p2022-2883-1
B	IS + Cal. 1								p2022-3105-2	p2022-3033-1	p2022-2959-1	p2022-2860-1
C									p2022-3051-1	p2022-3025-1	p2022-2954-1	p2022-2817-1
D									p2022-3049-1	p2022-3020-1	p2022-2943-1	m2022-3881-2
E									p2022-3047-1	p2022-3019-1	p2022-2934-1	m2022-3803-1
F									p2022-3045-1	p2022-3014-1	p2022-2895-1	negative blood
G									p2022-3044-1	p2022-2998-1	p2022-2888-1	IS + Cal. 1
H									p2022-3041-1	p2022-2973-1	p2022-2883-2	IS + Cal. 1

SC

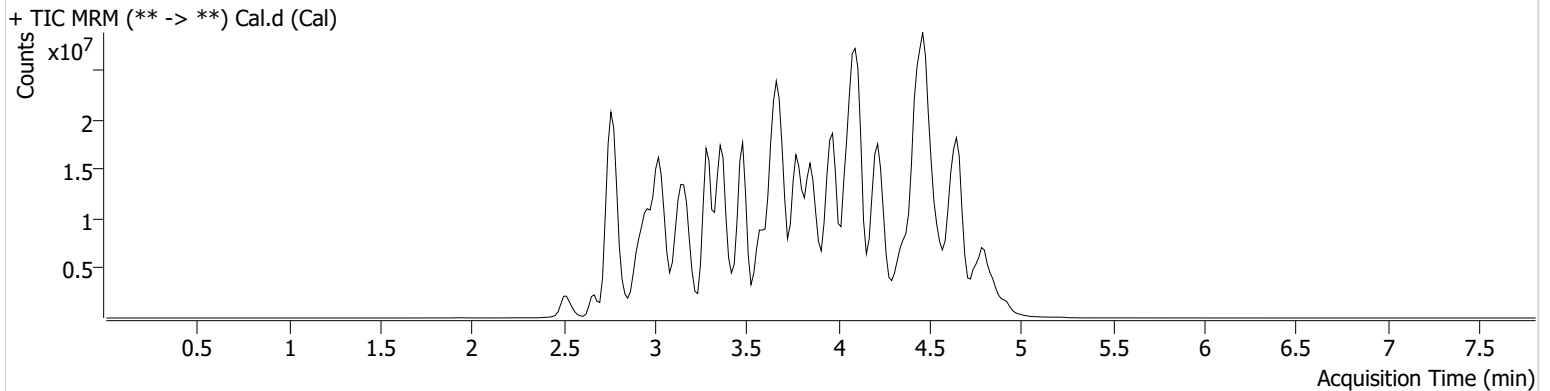
AM #25 Multi-Drug Screen Results



Batch results D:\MassHunter\Data\2022\AM 25-26\101922 AM 25 26 SC\QuantResults\AM 25.batch.bin
Calibration Last Update 10/20/2022 9:03:59 AM

Instrument	Falco (069901)	Data File	Cal.d
Type	Cal	Sample	Cal
Acq. Method	AM 25 MDS.m	Operator	Sarah Collins
Sample Position	P6-H12	Comment	
Injection Volume	5		
Acq. Date-Time	10/19/2022 9:16:08 AM		

Sample Chromatogram



Name	RT	Resp.	S/N	S/N	ISTD Resp.	Calc. Conc.
10-OH-Carbamazepine	3.778	6298436	99.96	17770.61	34977561	10.0000
6-MAM	3.064	136843	111.16	43604.64	3624613	10.0000
7-aminoclonazepam	3.605	2093834	1159.29	598.76	10729025	10.0000
7-aminoflunitrazepam	3.820	4775215	407.95	830.18	10729025	10.0000
9-Hydroxyrisperidone	3.982	10738442	629.81	250605.18	45434806	10.0000
Acetyl Fentanyl	4.033	513669	149.90	106.89	43529491	10.0000
Acetyl Norfentanyl	2.950	857323	88247.93	513.23	43529491	10.0000
a-hydroxyalprazolam	4.510	781091	344.38	177.91	10729025	10.0000
alpha-hydroxymidazolam	4.585	4458284	936.33	8457.96	10729025	10.0000
Alpha-PHP	3.917	5204068	2994.69	1900.52	43529491	10.0000
alpha-PVP	3.656	6933124	1404.55	1158.59	12655480	10.0000
Alprazolam	4.620	5524803	5135.58	312.48	34875428	10.0000
Amitriptyline	4.470	646871	17.99	25.45	2272721	10.0000
Amphetamine	2.954	3854961	709.26	2055.73	12655480	10.0000
Benzoyllecgonine	3.405	499403	1717.25	121.15	706327	10.0000
Brompheniramine	4.080	140814	152.48	659.66	53049412	10.0000
Buprenorphine	4.933	1094184	241.59	33054.01	3915834	10.0000
Bupropion	3.887	3495778	505.93	260.68	15350905	10.0000
Carbamazepine	4.242	15387462	∞	405.01	747798	10.0000
Carisoprodol	4.210	3600103	1194204.79	125.73	15649992	10.0000
Chlordiazepoxide	4.729	2407268	728.42	6747.83	34875428	10.0000
Chlorpheniramine	3.991	9941828	13970.75	22.81	53049412	10.0000
Chlorpromazine	4.680	550169	102.66	86.47	2347555	10.0000
Citalopram	4.094	4040011	644.41	1371.64	53049412	10.0000
Clomipramine	4.681	784888	7976.90	1432.74	53049412	10.0000
Clonazepam	4.434	2363907	869.86	200.25	34875428	10.0000
Clonazepam	4.369	3092865	2735952.72	410538.41	34875428	10.0000
Clozapine	4.463	3802480	628.66	442.08	12812428	10.0000
Cocaehtylene	3.864	8193810	3457495.32	15113.69	44603522	10.0000
Cocaine	3.666	10063531	1120.85	440.76	44603522	10.0000
Codeine	3.006	710641	1748.37	677.40	15546857	10.0000
Cyclobenzaprine	4.393	1516274	348.39	23.39	2272721	10.0000
Desipramine	4.394	1758894	677.29	176.22	2272721	10.0000
Dextromethorphan	4.116	2269614	495.16	1334.31	10285547	10.0000

Cal

SC

AM #25 Multi-Drug Screen Results



Name	RT	Resp.	S/N	S/N	ISTD Resp.	Calc. Conc.
Dextrophan	3.439	4777942	159941.16	1893.44	10285547	10.0000
Diazepam	4.853	2768199	584.36	401.86	34875428	10.0000
Dihydrocodeine	2.898	2463228	13565.72	596.73	15546857	10.0000
Diphenhydramine	4.071	13182309	1337.58	521.80	53049412	10.0000
Doxepin	4.192	1498966	97.31	32.39	21939223	10.0000
Doxylamine	3.699	20277979	5777.08	53158.97	10285547	10.0000
Duloxetine	4.345	15637	4874.94	1223.84	220677	10.0000
EDDP	4.115	2658884	565.39	335.47	4471632	10.0000
Estazolam	4.529	10834227	2396.24	1076.93	34875428	10.0000
Etizolam	4.646	514449	167357.56	632.86	34875428	10.0000
Fentanyl	4.232	296831	71.88	636.24	14633412	10.0000
Flualprazolam	4.494	2248800	837996.10	3198.20	34875428	10.0000
Flunitrazepam	4.558	4804665	2670.12	381.86	34875428	10.0000
Fluoxetine	4.328	823177	439.29	27.28	943724	10.0000
Flurazepam	4.322	5414207	733.25	184.90	34875428	10.0000
Hydrocodone	3.189	3036291	5919.48	429.10	15546857	10.0000
Hydromorphone	2.718	2225059	302.00	17640.32	578918	10.0000
Hydroxyzine	4.583	2797081	306.31	384.55	53049412	10.0000
Imipramine	4.423	3023338	1329.20	∞	2272721	10.0000
Ketamine	3.779	6706657	1289.65	63.16	23241236	10.0000
Lamotrigine	3.654	543024	174.92	3656.65	53049412	10.0000
Levamisole	3.135	5269549	7757.99	146.10	44603522	10.0000
Levetiracetam	2.677	2498548	730.30	925.85	53049412	10.0000
Lorazepam	4.434	992281	260.96	97.03	34875428	10.0000
Maprotiline	4.470	518770	28.36	53.39	2272721	10.0000
MDA	3.059	6318413	1086.22	135.16	14675602	10.0000
MDEA	3.288	9542672	580.02	414.51	14675602	10.0000
MDMA	3.135	12283622	952674.02	2466.81	14675602	10.0000
Meperidine	3.685	4354619	286.40	294.47	10285547	10.0000
Meprobamate	3.688	2623652	328286.24	144.96	15649992	10.0000
Methadone	4.420	6767521	255.84	442.86	4471632	10.0000
Methamphetamine	3.045	4532518	2254.51	∞	14675602	10.0000
Methocarbamol	3.578	440576	799.97	81199.44	4471632	10.0000
Methylphenidate	3.579	18759530	1030.18	6887.14	19109394	10.0000
Metoprolol	3.483	1789142	171.35	2104.60	10285547	10.0000
Midazolam	4.786	1608495	681.47	736.75	34875428	10.0000
Mirtazapine	4.233	5276753	856.84	1368.53	10285547	10.0000
Mitragynine	4.321	493076	160157.18	347947.24	10285547	10.0000
Morphine	2.551	634588	10.21	5681.75	578918	10.0000
Norbuprenorphine	3.875	138925	41545.26	608.21	3915834	10.0000
Nordiazepam	4.701	3087082	729.83	397.52	34875428	10.0000
Norfentanyl	3.379	14753179	17269.71	265.17	43529491	10.0000
Norhydrocodone	2.992	274623	73.75	116.55	578918	10.0000
Norketamine	3.888	1773069	433.20	3550.07	23241236	10.0000
Normeperidine	3.641	3785644	315.02	481.99	53049412	10.0000
Noroxycodone	2.944	4336498	689.65	249.70	23241236	10.0000
Nortriptyline	4.425	449454	285.95	108.07	2272721	10.0000
O-desmethyl-tramadol	2.963	18354799	25813.52	558.68	53049412	10.0000
O-desmethylvenlafaxine	3.299	3649591	954.25	7026.19	15975503	10.0000
Olanzapine	3.957	720020	341709.25	44721.48	747798	10.0000
Oxazepam	4.515	5220096	597.72	60.32	23276951	10.0000
Oxycodone	3.035	5599820	572.66	1468.09	23241236	10.0000
Oxymorphone	2.503	5317148	∞	265.10	578918	10.0000
Paroxetine	4.355	119457	46.95	69.69	943724	10.0000
Phenazepam	4.630	4592288	969.21	494.76	34875428	10.0000
Phencyclidine	3.963	8246862	788639.77	1251.77	10285547	10.0000
Phentermine	3.199	1694103	132.86	25.80	19109394	10.0000
Phenytoin	4.133	1408051	516.90	95.32	747798	10.0000
Primidone	3.488	2617562	2094237.20	195.21	747798	10.0000
Promethazine	4.407	3401970	541.81	104.63	53049412	10.0000

Cal

SC

AM #25 Multi-Drug Screen Results



Name	RT	Resp.	S/N	S/N	ISTD Resp.	Calc. Conc.
Pseudoephedrine	2.769	65334073	815.28	1058.96	14675602	10.0000
Quetiapine	4.638	5380393	813518.97	459.65	58413878	10.0000
Risperidone	4.183	8744565	3244.01	242.41	45434806	10.0000
Sertraline	4.575	229049	201.74	85.29	943724	10.0000
Sufentanil	4.644	151876	44985.45	32.50	43529491	10.0000
Tapentadol	3.488	11657781	730.27	2313.86	23241236	10.0000
Temazepam	4.668	8558104	489.66	83.23	34875428	10.0000
Topiramate	3.847	186442	66768.68	35382.41	832487	10.0000
Tramadol	3.484	32077230	2079.78	83.35	53049412	10.0000
Trazodone	4.820	5910398	546.50	1086.59	21939223	10.0000
Venlafaxine	3.837	14495256	1610.48	181.91	943724	10.0000
Zaleplon	4.344	5482820	693.49	595.23	58413878	10.0000
Zolpidem	4.467	18817366	1994999.27	2888.01	58413878	10.0000
Zopiclone	4.383	2044087	561632.01	215697.19	8239091	10.0000

SC

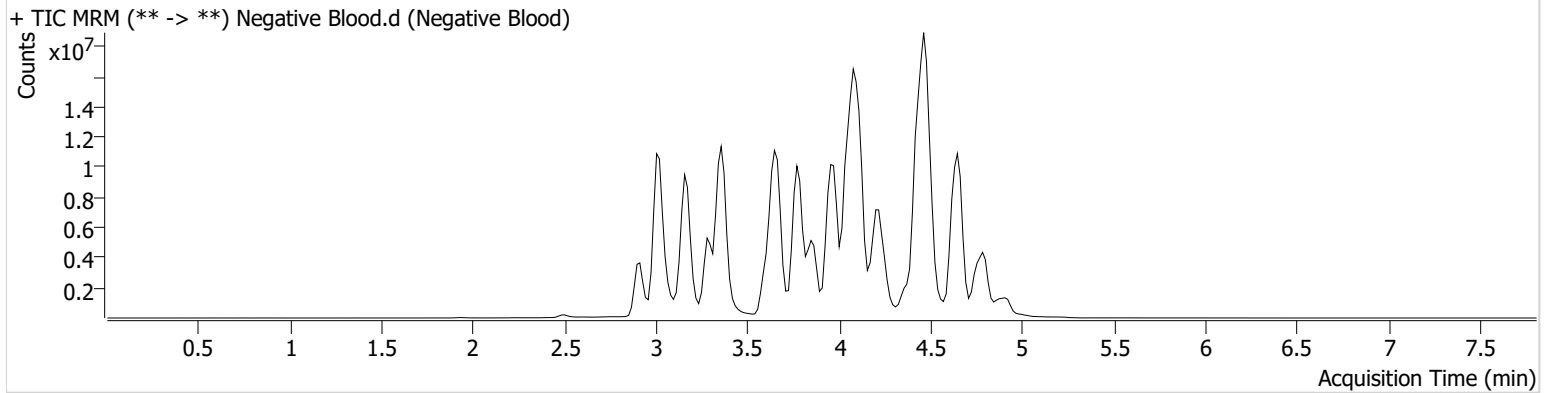


AM #25 Multi-Drug Screen Results

Batch results D:\MassHunter\Data\2022\AM 25-26\101922 AM 25 26 SC\QuantResults\AM 25.batch.bin
Calibration Last Update 10/20/2022 9:03:59 AM

Instrument	Falco (069901)	Data File	Negative Blood.d
Type	Sample	Sample	Negative Blood
Acq. Method	AM 25 MDS.m	Operator	Sarah Collins
Sample Position	P6-F12	Comment	
Injection Volume	5		
Acq. Date-Time	10/19/2022 9:24:44 AM		
Sample Info.			

Sample Chromatogram



SC

AM# 26: Screening of THC and Metabolites in Blood and Urine by LC-MS/MS

Extraction Date: 10/18/2022

Plate lot#: IDP-108-3-220802

10mM Ammonium Formate 01/27/2023

Mobile phase A: ~~0.1% Formic Acid in LCMS Water~~

Blank Blood Lot: Lampire 22B52015-1

Column: Phenomenex Phenyl Hexyl (4.6x50mm, 2.6um)

LCMS-QQQ ID: 069901

Analyst: Sarah Collins

Retest Date: 02/02/2023

0.1% Formic Acid in Methanol 01/27/2023

Mobile phase B: ~~0.1% Formic acid in Acetonitrile~~

Blank Urine Lot: N/A

Pre-Analytic:

- 1. Check levels of mobile phases and needle wash refill as needed. Ensure waste is not full.
- 2. Ensure correct column is installed and begin mobile phase flow allow to equilibrate ~ 30 minutes.

Analytic:

- 1. Remove standards, plate, controls, and samples from cold storage. Allow to reach room temperature.
- 2. Urine hydrolysis: add 1.5mL urine to blank plate, add 250µl 1N KOH. Shake and incubate at 40 degrees for 15 minutes.
Using a calibrated pipette, add **1000µl blood and urine (if applicable) (calibrated pipette)** into the appropriate wells of analytical (standards) plate. **Pipette ID: 3382167**
- 3. Place on shaking incubator at ambient temp., 900rpm for 15 minutes.
- 4. Pipette **500µL 0.1% formic acid in water blood sample, 500 µL saturated phosphate buffer in urine** in wells of analytical plate.
- 5. Place on shaking incubator at ambient temp., 900rpm for 15 minutes.
- 6. Transfer **700-800µL of blood+acid or urine+acid** mixture to corresponding wells of SLE+ plate.
Amount transferred: 800 uL
- 7. Apply positive pressure for approx. 10-15 seconds (or until no liquid remains on top of sorbent).
(Load at 85-100 PSI- Selector to the right)
- 8. Wait 5 minutes.
- 9. Add **2.25mL MTBE. (Add in 3 increments of 750uL)**
- 10. Wait 5 minutes.
- 11. Apply positive pressure for approx. 15 seconds. **(10-15 PSI- Selector to the left).**
- 12. Add **2.25mL Hexane. (Add in 3 increments of 750uL)**
- 13. Wait 5 minutes.
- 14. Apply positive pressure for approx. 15 seconds. **(10-15 PSI- Selector to the left).**
- 15. Remove plate containing eluate. Place on SPE Dry and evaporate to dryness at approx. 35°C.
- 16. Reconstitute in **100µL 100% MeOH** and heat seal plate with foil. Place in autosampler and run worklist.

Post-Analytic

- 1. Create batch and process data.
- 2. Make any necessary integration changes, Curve weighting of Linear 1/x with r^2 values ≥ 0.98 for each analyte
- 3. RT +/- 3% or 0.100 min, whichever is greater, +/- 20% Accuracy for greater than (+/- 30% for 10ng/ml or less).
- 4. Case sample response for THC and OH-THC 3ng/mL (quantitative), Carboxy-THC: 10ng/mL (qualitative only) will be reported. Samples with a THC or OH-THC response over 50 ng/mL will be reported out as greater than 50 ng/mL.
- 5. Did all QCs pass for each analyte? (if not, describe in comments section)
- 6. Enter QCs into control charting.
- 7. Central File Packet to include: LIMS Worklist, Method Checklist, Calibration and Control Reports

COMMENTS: Samples were extracted on 10/18/22 and injected on 10/19/22. The samples were stored in the freezer until they were ready for injection.

SC

	1	2	3	4	5	6
A	IS + Cal. 1	IS + QC_2	p2022-2895-1	p2022-3014-1	p2022-3045-1*	p2022-2959-1
B	IS + Cal. 2	negative blood	p2022-2934-1	p2022-3019-1	p2022-3047-1	p2022-2998-1
C	IS + Cal. 3	m2022-3803-1	p2022-2943-1	p2022-3020-1*	p2022-3049-1	p2022-3020-1
D	IS + Cal. 4	m2022-3881-2*	p2022-2954-1	p2022-3025-1	p2022-3051-1	p2022-3045-1
E	IS + Cal. 5	p2022-2817-1	p2022-2959-1*	p2022-3033-1	p2022-3105-2	p2022-3126-1
F	IS + Cal. 6	p2022-2860-1	p2022-2960-1	p2022-3040-1	p2022-3126-1*	
G	IS + Cal. 7	p2022-2883-1	p2022-2973-1	p2022-3041-1	m2022-3881-2	
H	IS + QC_1 blood	p2022-2883-2*	p2022-2998-1*	p2022-3044-1	p2022-2883-2	

All wells to contain 100 µl of residual DMSO

*Samples moved during analytical step 6 due to blood clot

SC

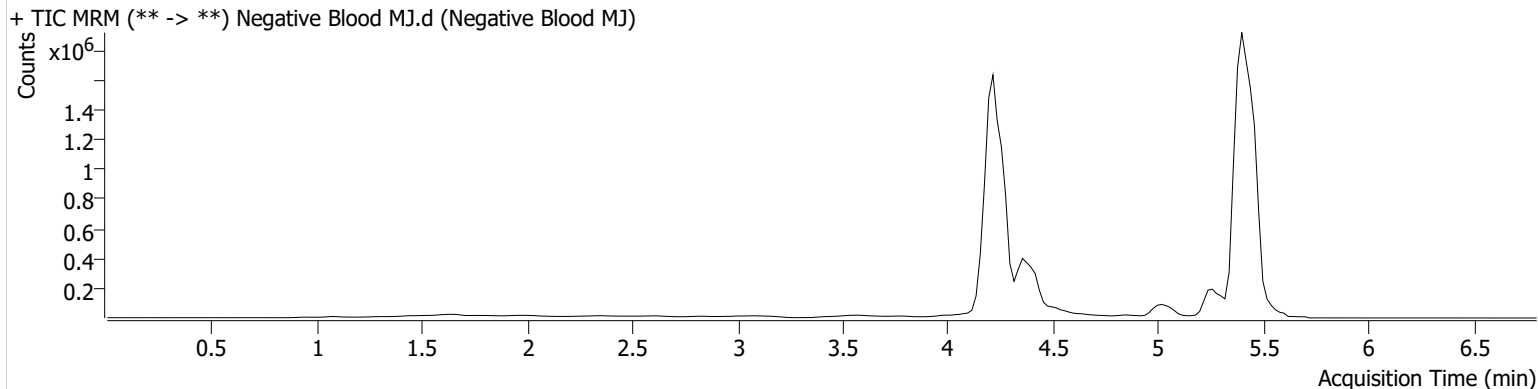


AM #26 Cannabinoids Screen Results

Batch results D:\MassHunter\Data\2022\AM 25-26\101922 AM 25 26 SC\QuantResults\AM 26.batch.bin
Calibration Last Update 10/20/2022 9:03:50 AM

Instrument	Falco (069901)	Data File	Negative Blood MJ.d
Type	Sample	Sample	Negative Blood MJ
Acq. Method	AM 26 THC.m	Operator	Sarah Collins
Sample Position	P1-B2	Comment	
Injection Volume	10		
Acq. Date-Time	10/19/2022 3:40:50 PM		
Sample Info.			

Sample Chromatogram



SC

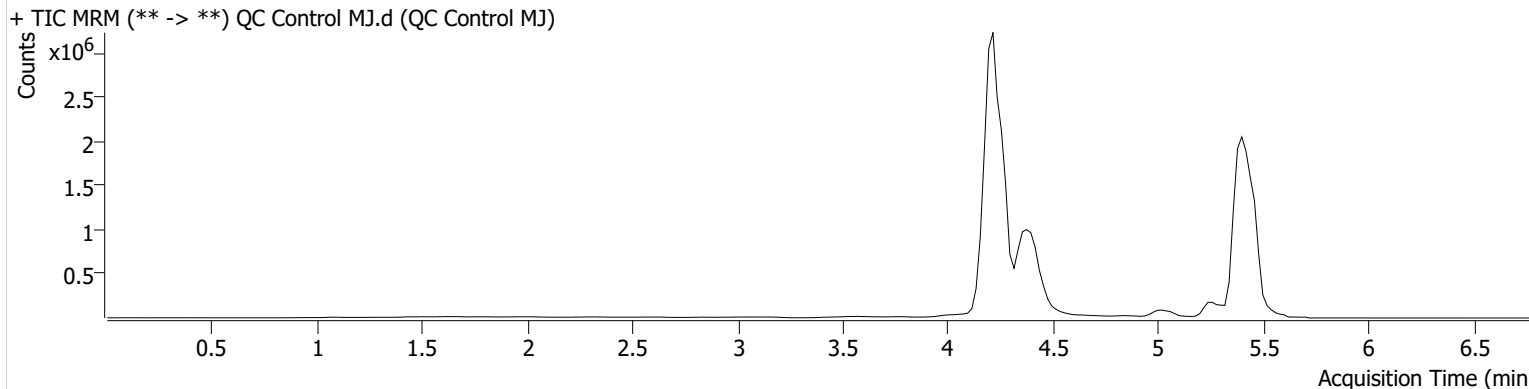


AM #26 Cannabinoids Screen Results

Batch results D:\MassHunter\Data\2022\AM 25-26\101922 AM 25 26 SC\QuantResults\AM 26.batch.bin
Calibration Last Update 10/20/2022 9:03:50 AM

Instrument	Falco (069901)	Data File	QC Control MJ.d
Type	QC	Sample	QC Control MJ
Acq. Method	AM 26 THC.m	Operator	Sarah Collins
Sample Position	P1-H1	Comment	
Injection Volume	10		
Acq. Date-Time	10/19/2022 3:25:40 PM		

Sample Chromatogram



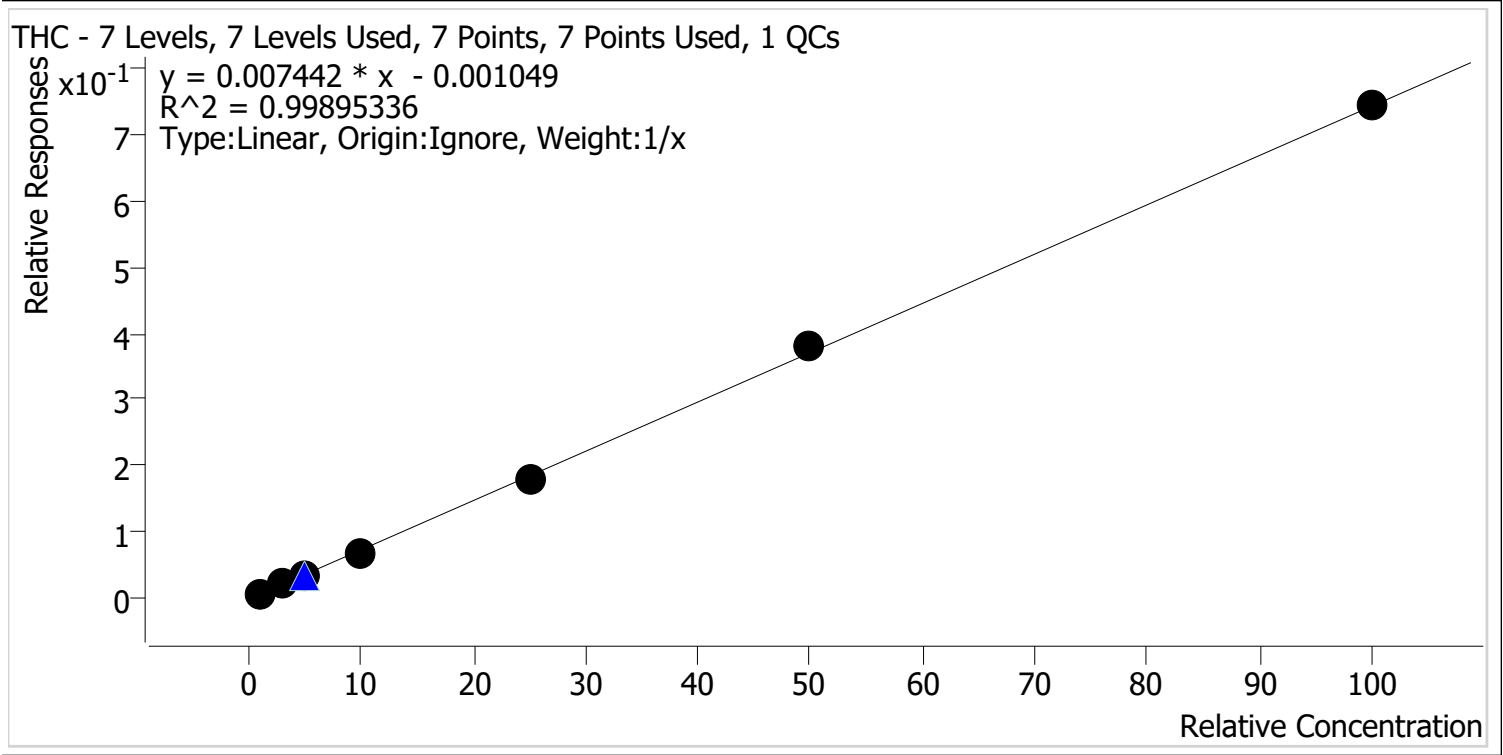
Name	RT	Resp.	ISTD Resp.	Final Conc.
THC	5.369	19643	540452	5.0251 ng/ml
THC-COOH	4.396	891819	4529241	14.0708 ng/ml
THC-OH	4.222	155358	18139388	4.6465 ng/ml

SC



AM #26 Cannabinoids Screen Calibration Curve Report

Batch results D:\MassHunter\Data\2022\AM 25-26\101922 AM 25 26 SC\QuantResults\AM 26.batch.bin
Last Cal. Update 10/20/2022 9:03 AM
Analyst Name ISP\datastor
Analyte THC **Internal Standard** THC-D3



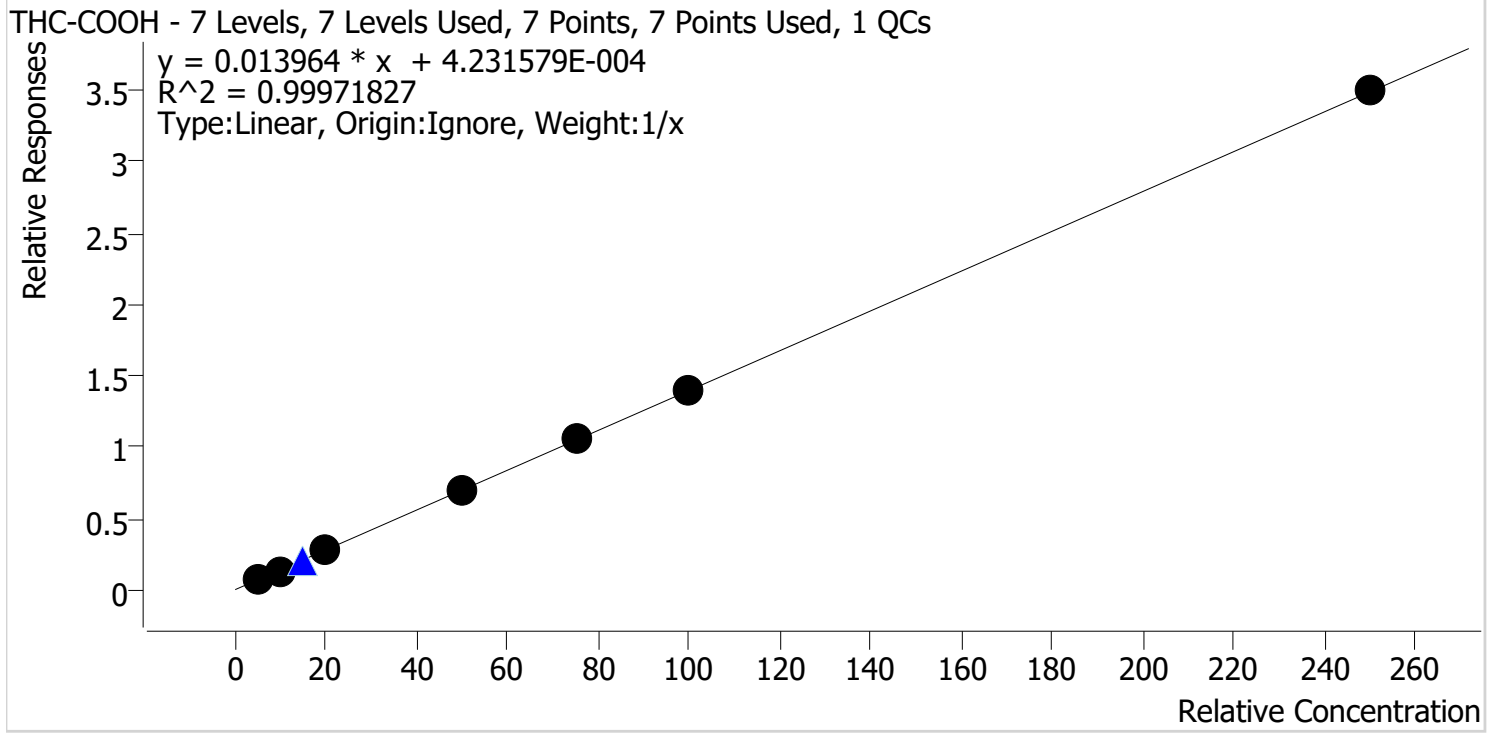
Sample	Level	Enabled	Expected Concentration	Final Concentration	Accuracy
Cal 1 MJ	1	✓	1.0	1.1	110.4
Cal 2 MJ	2	✓	3.0	3.1	101.7
Cal 3 MJ	3	✓	5.0	4.9	97.2
Cal 4 MJ	4	✓	10.0	9.0	89.8
Cal 5 MJ	5	✓	25.0	24.5	97.8
Cal 6 MJ	6	✓	50.0	51.5	102.9
Cal 7 MJ	7	✓	100.0	100.1	100.1

SC



AM #26 Cannabinoids Screen Calibration Curve Report

Batch results D:\MassHunter\Data\2022\AM 25-26\101922 AM 25 26 SC\QuantResults\AM 26.batch.bin
Last Cal. Update 10/20/2022 9:03 AM
Analyst Name ISP\datastor
Analyte THC-COOH **Internal Standard** THC-COOH-D9



Sample	Level	Enabled	Expected Concentration	Final Concentration	Accuracy
Cal 1 MJ	1	✓	5.0	5.5	109.1
Cal 2 MJ	2	✓	10.0	9.5	94.7
Cal 3 MJ	3	✓	20.0	19.2	95.9
Cal 4 MJ	4	✓	50.0	49.7	99.4
Cal 5 MJ	5	✓	75.0	75.1	100.2
Cal 6 MJ	6	✓	100.0	100.4	100.4
Cal 7 MJ	7	✓	250.0	250.6	100.2

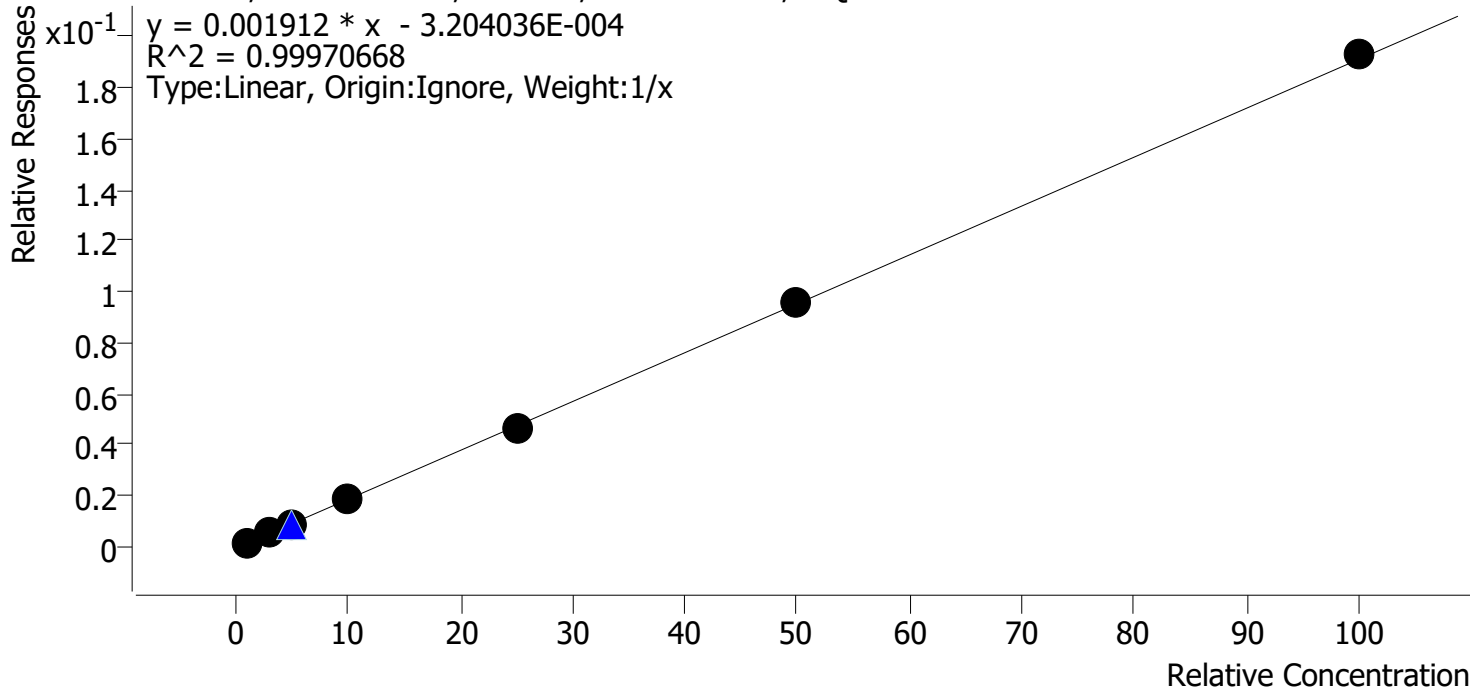
SC



AM #26 Cannabinoids Screen Calibration Curve Report

Batch results D:\MassHunter\Data\2022\AM 25-26\101922 AM 25 26 SC\QuantResults\AM 26.batch.bin
Last Cal. Update 10/20/2022 9:03 AM
Analyst Name ISP\datastor
Analyte THC-OH **Internal Standard** THC-OH-D3

THC-OH - 7 Levels, 7 Levels Used, 7 Points, 7 Points Used, 1 QCs



Sample	Level	Enabled	Expected Concentration	Final Concentration	Accuracy
Cal 1 MJ	1	✓	1.0	1.1	111.0
Cal 2 MJ	2	✓	3.0	2.9	97.1
Cal 3 MJ	3	✓	5.0	4.8	95.6
Cal 4 MJ	4	✓	10.0	9.7	97.0
Cal 5 MJ	5	✓	25.0	24.6	98.4
Cal 6 MJ	6	✓	50.0	50.0	99.9
Cal 7 MJ	7	✓	100.0	100.9	100.9

SC

AM #26 Cannabinoids Screen Results

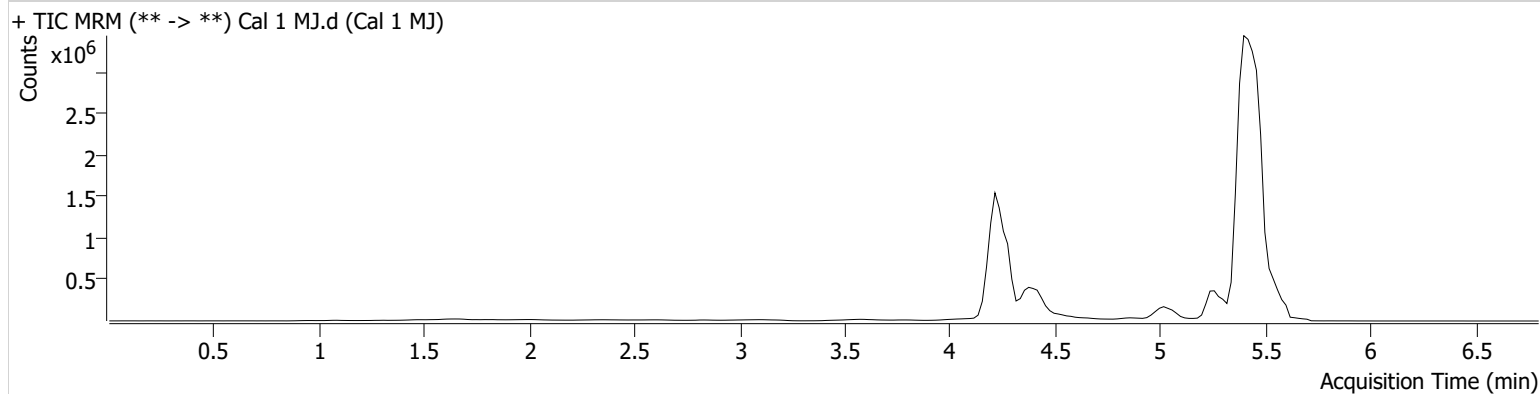


Batch results D:\MassHunter\Data\2022\AM 25-26\101922 AM 25 26 SC\QuantResults\AM 26.batch.bin
Calibration Last Update 10/20/2022 9:03:50 AM

Instrument	Falco (069901)	Data File	Cal 1 MJ.d
Type	Cal	Sample	Cal 1 MJ
Acq. Method	AM 26 THC.m	Operator	Sarah Collins
Sample Position	P1-A1	Comment	
Injection Volume	10		
Acq. Date-Time	10/19/2022 2:32:32 PM		

Sample Info.

Sample Chromatogram



Name	RT	Resp.	ISTD Resp.	Final Conc.	
THC	5.369	4775	666508	1.1037 ng/ml	Low
THC-COOH	4.416	161192	2103848	5.4567 ng/ml	
THC-OH	4.242	16249	9015348	1.1101 ng/ml	Low

SC



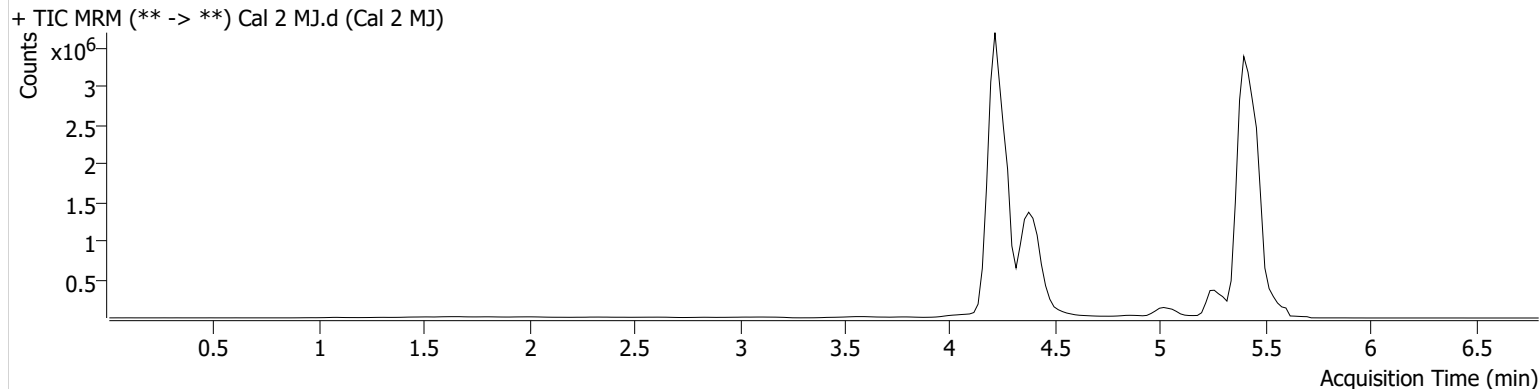
AM #26 Cannabinoids Screen Results

Batch results D:\MassHunter\Data\2022\AM 25-26\101922 AM 25 26 SC\QuantResults\AM 26.batch.bin
Calibration Last Update 10/20/2022 9:03:50 AM

Instrument	Falco (069901)	Data File	Cal 2 MJ.d
Type	Cal	Sample	Cal 2 MJ
Acq. Method	AM 26 THC.m	Operator	Sarah Collins
Sample Position	P1-B1	Comment	
Injection Volume	10		
Acq. Date-Time	10/19/2022 2:40:16 PM		

Sample Info.

Sample Chromatogram



Name	RT	Resp.	ISTD Resp.	Final Conc.
THC	5.369	17109	789720	3.0522 ng/ml
THC-COOH	4.396	857650	6467364	9.4667 ng/ml
THC-OH	4.222	107393	20452981	2.9134 ng/ml Low

SC

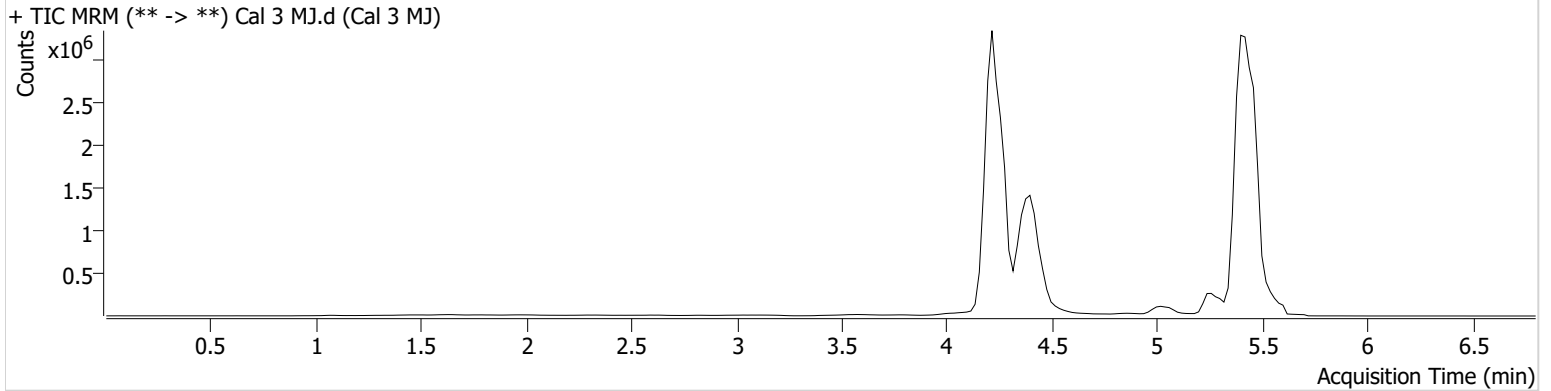


AM #26 Cannabinoids Screen Results

Batch results D:\MassHunter\Data\2022\AM 25-26\101922 AM 25 26 SC\QuantResults\AM 26.batch.bin
Calibration Last Update 10/20/2022 9:03:50 AM

Instrument	Falco (069901)	Data File	Cal 3 MJ.d
Type	Cal	Sample	Cal 3 MJ
Acq. Method	AM 26 THC.m	Operator	Sarah Collins
Sample Position	P1-C1	Comment	
Injection Volume	10		
Acq. Date-Time	10/19/2022 2:47:50 PM		

Sample Chromatogram



Name	RT	Resp.	ISTD Resp.	Final Conc.
THC	5.369	22761	647982	4.8610 ng/ml
THC-COOH	4.396	1456609	5429941	19.1807 ng/ml
THC-OH	4.222	156432	17736929	4.7798 ng/ml

SC

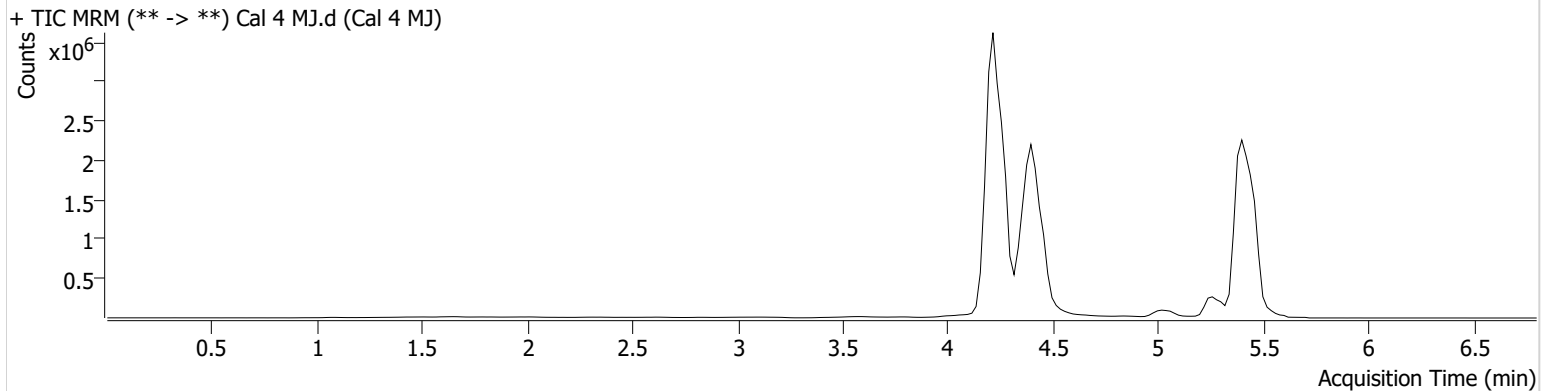


AM #26 Cannabinoids Screen Results

Batch results D:\MassHunter\Data\2022\AM 25-26\101922 AM 25 26 SC\QuantResults\AM 26.batch.bin
Calibration Last Update 10/20/2022 9:03:50 AM

Instrument	Falco (069901)	Data File	Cal 4 MJ.d
Type	Cal	Sample	Cal 4 MJ
Acq. Method	AM 26 THC.m	Operator	Sarah Collins
Sample Position	P1-D1	Comment	
Injection Volume	10		
Acq. Date-Time	10/19/2022 2:55:25 PM		

Sample Chromatogram



Name	RT	Resp.	ISTD Resp.	Final Conc.
THC	5.369	54508	828408	8.9827 ng/ml
THC-COOH	4.396	3432165	4940764	49.7179 ng/ml
THC-OH	4.222	324946	17818956	9.7041 ng/ml

SC

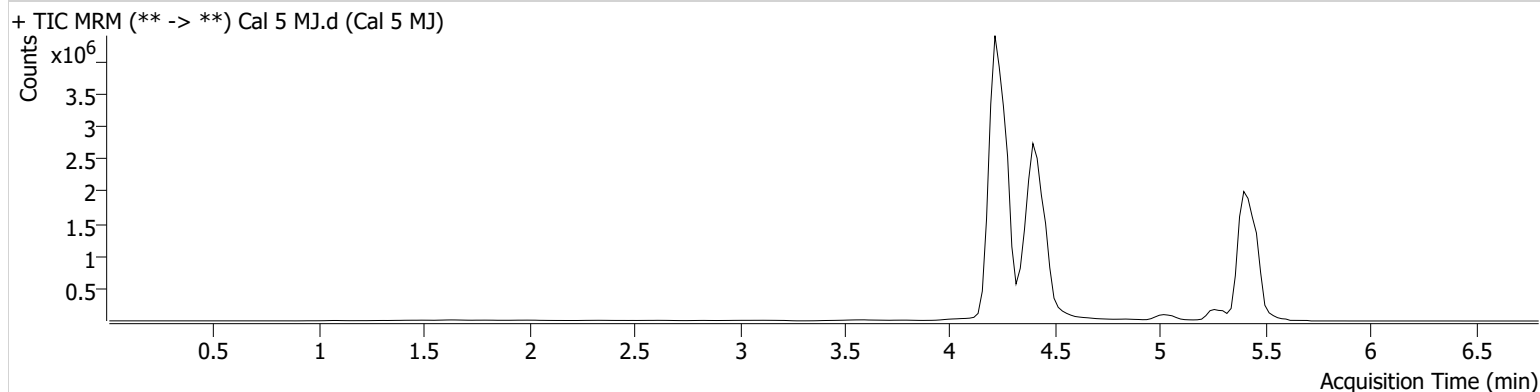


AM #26 Cannabinoids Screen Results

Batch results D:\MassHunter\Data\2022\AM 25-26\101922 AM 25 26 SC\QuantResults\AM 26.batch.bin
Calibration Last Update 10/20/2022 9:03:50 AM

Instrument	Falco (069901)	Data File	Cal 5 MJ.d
Type	Cal	Sample	Cal 5 MJ
Acq. Method	AM 26 THC.m	Operator	Sarah Collins
Sample Position	P1-E1	Comment	
Injection Volume	10		
Acq. Date-Time	10/19/2022 3:02:59 PM		
Sample Info.			

Sample Chromatogram



Name	RT	Resp.	ISTD Resp.	Final Conc.
THC	5.389	120500	665770	24.4621 ng/ml
THC-COOH	4.396	4751191	4527077	75.1299 ng/ml
THC-OH	4.222	840421	17990416	24.5972 ng/ml

SC



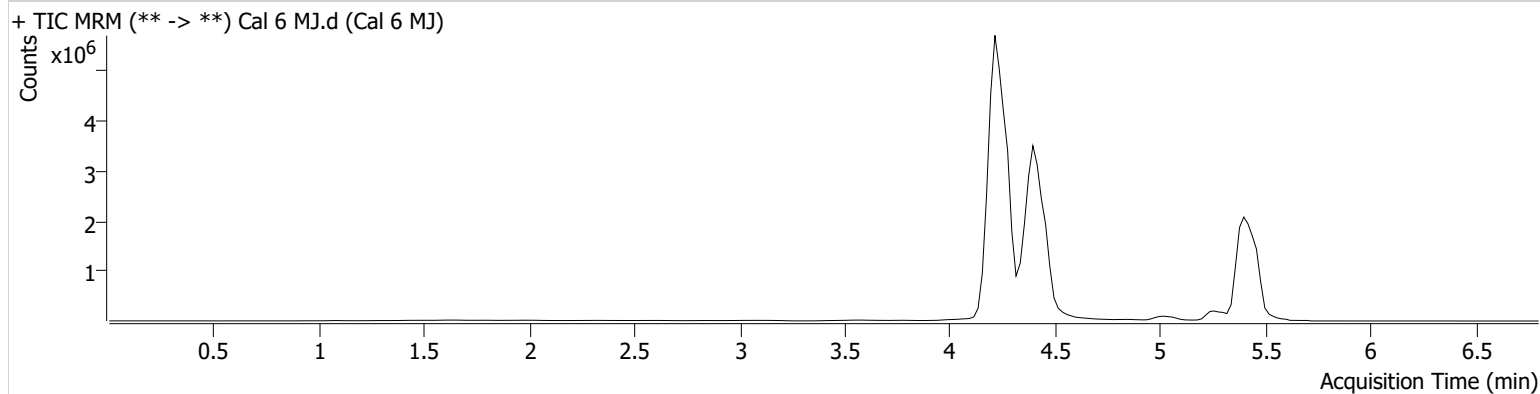
AM #26 Cannabinoids Screen Results

Batch results D:\MassHunter\Data\2022\AM 25-26\101922 AM 25 26 SC\QuantResults\AM 26.batch.bin
Calibration Last Update 10/20/2022 9:03:50 AM

Instrument	Falco (069901)	Data File	Cal 6 MJ.d
Type	Cal	Sample	Cal 6 MJ
Acq. Method	AM 26 THC.m	Operator	Sarah Collins
Sample Position	P1-F1	Comment	
Injection Volume	10		
Acq. Date-Time	10/19/2022 3:10:33 PM		

Sample Info.

Sample Chromatogram



Name	RT	Resp.	ISTD Resp.	Final Conc.
THC	5.369	248021	649462	51.4573 ng/ml
THC-COOH	4.396	6689070	4767630	100.4466 ng/ml
THC-OH	4.222	1803920	18948225	49.9539 ng/ml

SC

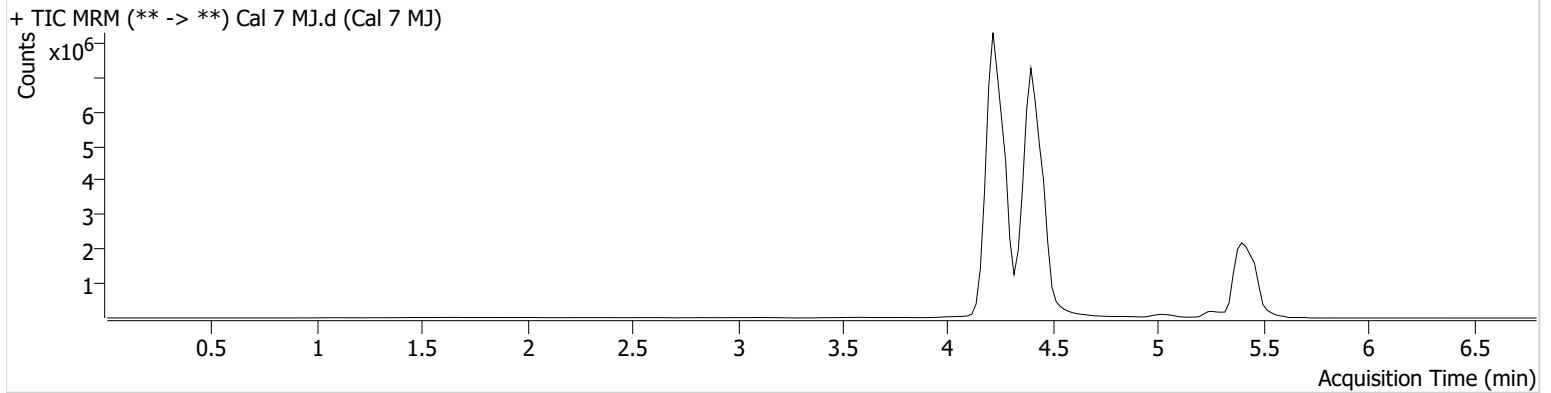


AM #26 Cannabinoids Screen Results

Batch results D:\MassHunter\Data\2022\AM 25-26\101922 AM 25 26 SC\QuantResults\AM 26.batch.bin
Calibration Last Update 10/20/2022 9:03:50 AM

Instrument	Falco (069901)	Data File	Cal 7 MJ.d
Type	Cal	Sample	Cal 7 MJ
Acq. Method	AM 26 THC.m	Operator	Sarah Collins
Sample Position	P1-G1	Comment	
Injection Volume	10		
Acq. Date-Time	10/19/2022 3:18:06 PM		
Sample Info.			

Sample Chromatogram



Name	RT	Resp.	ISTD Resp.	Final Conc.
THC	5.369	351966	473239	100.0810 ng/ml
THC-COOH	4.396	15627956	4465489	250.6016 ng/ml
THC-OH	4.222	3479565	18056687	100.9415 ng/ml